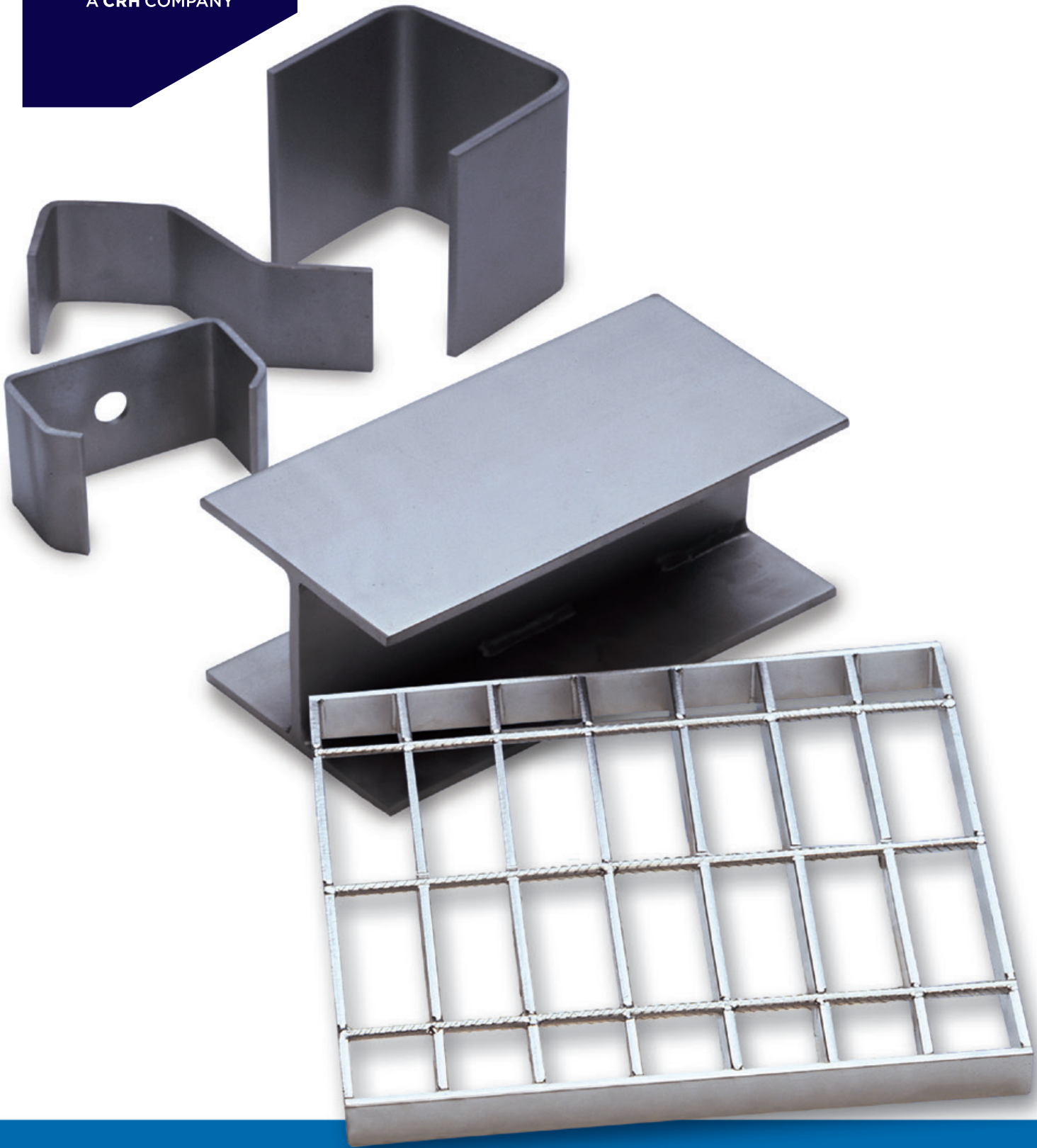


Leviat[®]
A CRH COMPANY



Ancon[®]
**Stainless Steel
Sections & Flooring**
for the Engineering Industry

November 2020



We are one team. **We are Leviat.**

Leviat is the new name of CRH's construction accessories companies worldwide.

Under the Leviat brand, we are uniting the expertise, skills and resources of Ancon and its sister companies to create a world leader in fixing, connecting and anchoring technology.

The products you know and trust will remain an integral part of Leviat's comprehensive brand and product portfolio. As Leviat, we can offer you an extended range of specialist products and services, greater technical expertise, a larger and more agile supply chain and better, faster innovation.

By bringing together CRH's construction accessories family as one global organisation, we are better equipped to meet the needs of our customers, and the demands of construction projects, of any scale, anywhere in the world.

This is an exciting change. Join us on our journey.

Read more about Leviat at [Leviat.com](https://www.leviat.com)



Our product brands include:

Ancon[®]

Connolly

HALFEN

HELIFIX

ISEDIO

PLAKA



60

locations

sales in
30+
countries

3000

people worldwide

Imagine. Model. Make.

Leviat.com

Stainless Steel Sections & Flooring

Company Overview

Leviat designs and manufactures high integrity steel components for a wide range of industries. Primarily, products are manufactured from stainless steel.



Section Forming

Contents

Austenitic Stainless Steel	4
Cold Formed Sections	4-5
Fabricated Sections	6
Staigrd Open Grid Flooring	7

Cold Formed Sections

Leviat manufactures a diverse range of stainless steel cold formed sections using the latest high capacity computer controlled machinery.

Computer controlled press brakes, which are among the most advanced in the industry, enable the company to produce a wide range of section shapes up to 5m in length and from 2mm to 20mm in thickness.

Austenitic Stainless Steel

Austenitic Stainless Steels are high in chromium and therefore offer excellent resistance to corrosion. They are ductile and strong, and can be readily formed and welded.

Leviat holds considerable stocks of standard grade Austenitic stainless steel in order to meet urgent delivery deadlines.

Grade 1.4301 (304) is the most commonly used and is suitable for a broad range of applications. Grade 1.4401 (316) is recommended for highly corrosive environments such as marine locations.

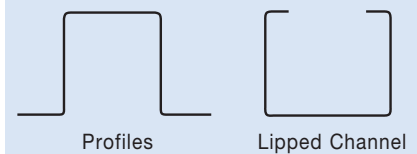
Material can be supplied fully certificated if required.



Typical Section Properties

As an aid to the selection of appropriate cold formed sections the following page shows a small sample of section properties. A full list of properties is available on request.

Other typical section shapes include:



Ancillary Operations

Sections can be offered with a range of ancillary operations including laser profiling, welded stiffeners, punched holes or slots and curves.

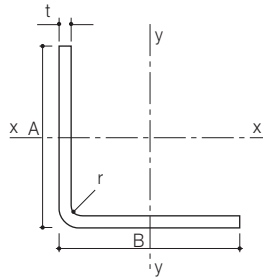
Products can be supplied with a specific surface finish to suit the requirements of the application. Services available include electro-polishing and bead blasting.



Punching

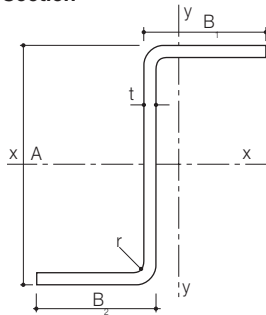


Angle Section



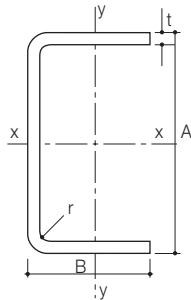
Angle Size A x B mm	Thickness t mm	Radius r mm	Moment of Inertia I (cm ⁴)		Section Modulus Z (cm ³)		Weight kg/m
			xx	yy	xx	yy	
25 x 25	3	3	0.79	0.79	0.46	0.46	1.07
50 x 50	3	3	1.42	1.42	0.67	0.67	1.31
130 x 120	5	8	208.03	171.27	22.21	19.29	9.50
100 x 120	6	16	117.69	183.12	15.90	21.89	9.76
150 x 140	6	16	380.64	322.12	35.33	31.31	13.08
140 x 120	8	15	389.54	267.49	39.75	30.28	15.41
190 x 200	8	15	1075.07	1217.56	76.97	84.22	23.63
110 x 100	10	21	223.70	177.20	29.59	25.00	14.92
140 x 130	10	21	484.83	404.66	49.36	43.30	19.66
140 x 200	10	21	559.31	1334.58	52.62	98.68	25.19
180 x 180	10	21	1092.62	1092.62	84.25	84.25	26.77
120 x 110	12	20	346.68	279.90	42.07	36.03	19.61
170 x 140	12	20	1005.93	625.14	85.98	60.94	27.19
130 x 100	15	20	502.51	262.08	58.84	36.77	24.08
150 x 130	15	20	835.59	586.74	81.71	63.27	30.00

Zed Section



Zed Size A x B _z x B _z mm	Thickness t mm	Radius r mm	Moment of Inertia I (cm ⁴)		Section Modulus Z (cm ³)		Weight kg/m
			xx	yy	xx	yy	
50 x 25 x 25	3	3	9.73	10.90	3.89	3.47	2.14
140 x 70 x 35	4	4	251.28	123.46	31.31	17.50	7.33
70 x 35 x 35	5	4	42.83	48.04	12.24	11.08	4.91
110 x 50 x 50	6	8	153.15	163.11	30.63	26.17	8.46
160 x 80 x 40	8	8	674.19	289.95	73.30	37.84	16.03
200 x 100 x 100	10	15	2125.48	2302.29	212.55	181.97	28.66
150 x 75 x 75	12	15	943.93	948.66	125.86	105.16	24.46
190 x 95 x 95	15	10	2078.96	2216.59	218.84	187.89	32.04

Equal Channel Section

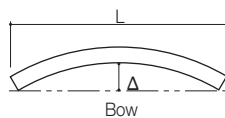


Channel Size A x B mm	Thickness t mm	Radius r mm	Moment of Inertia I (cm ⁴)		Section Modulus Z (cm ³)			Weight kg/m
			xx	yy	xx	yy max	yy min	
50 x 25	3	3	9.70	1.56	3.88	2.04	0.90	2.14
100 x 50	4	4	113.00	18.06	22.60	12.58	5.07	5.90
160 x 80	5	4	603.40	95.76	75.42	43.04	16.58	12.02
110 x 55	6	8	208.39	33.67	37.89	20.16	8.79	9.41
80 x 40	8	8	87.34	14.17	21.83	10.23	5.42	8.45
200 x 100	10	15	2118.70	342.27	211.87	113.98	48.92	28.66
150 x 75	12	15	935.18	151.80	124.69	61.47	30.18	24.46
190 x 95	15	20	2372.83	385.13	249.77	123.11	60.44	38.68

Note: Properties listed vary from those for rolled sections due to cold forming and the effect of the formed radius.

Tolerances

Unless otherwise agreed the tolerances applicable to cold formed sections are as below:



Element		Tolerance
Overall length (up to and including 4000mm)	L	±5mm
Leg Length - Angle	A/B	±3mm
Leg Length - Channel/Zed	A	±5mm
	B	±3mm
Thickness	t	±7.5%
Included Angle	α	±2°
Hole or Slot Centres	c	±5mm
Bow, on both axis	Δ	±3mm per metre length

Notes: 1 The manufacturing tolerances set out in the table will meet most applications. Should closer tolerances be required, please provide a drawing indicating your requirements. 2 The tolerances are not applicable to curved members.

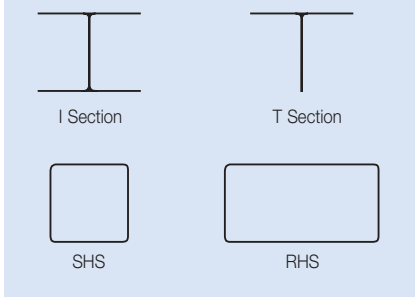
Stainless Steel Sections & Flooring

Fabricated Sections

In addition to cold formed sections, Leviat produces stainless steel fabricated sections.

Our fabrication personnel are routinely coded to BS4872 and in addition are regularly approved to BS EN 287 to weld to the procedures specific to BS EN 288.

Sections available include:

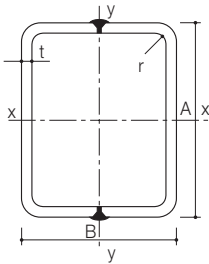


Typical Fabricated Section Properties

As an aid to the selection of appropriate fabricated sections the following is a small sample of section properties. A full list of properties is available on request.

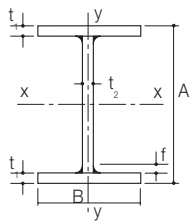


Fabricated Hollow Section



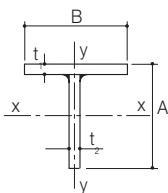
Box Section Size A x B	Thickness t	Radius r	Moment of Inertia I (cm ⁴)		Section Modulus Z (cm ³)		Weight kg/m
			xx	yy	xx	yy	
70 x 50	4	4	54.44	32.01	15.56	12.80	6.75
130 x 130	5	4	628.43	628.43	96.68	96.68	19.31
150 x 100	6	8	821.26	437.42	109.50	87.48	21.67
110 x 80	8	8	394.26	236.88	71.68	59.22	20.69
170 x 150	10	15	2232.86	1837.29	262.69	244.97	44.69
150 x 130	12	15	1641.79	1307.74	218.91	201.19	45.12
200 x 200	15	20	5650.88	5650.88	565.09	565.09	82.09

Fabricated I Section



I Section Size B x A	Size of Fillet f	Thickness		Moment of Inertia I _{xx} (cm ⁴)	Section Modulus Z _{xx} (cm ³)	Radius of Gyration about yy axis		Weight kg/m
		t ₁	t ₂			R _y (cm)	A/t ₁	
130 x 200	6	8	6	2229.5	223.0	3.03	25.0	25.72
150 x 300	6	10	6	7407.6	493.8	3.47	30.0	37.54
200 x 300	6	10	6	9510.9	634.1	4.85	30.0	45.44
250 x 450	10	16	10	43774.0	1946.0	5.85	28.1	97.80

Fabricated T Section



T Section Size B x A	Size of Fillet f	Thickness		Moment of Inertia I _{xx} (cm ⁴)	Section Modulus Z _{xx} (cm ³)		Radius of Gyration about yy axis R _y (cm)	Weight kg/m
		t ₁	t ₂		Max.	Min.		
75 x 100	8	8	8	134.87	42.75	19.70	1.46	11.06
100 x 120	10	10	8	258.08	78.00	29.69	2.11	15.64
150 x 150	10	10	10	637.24	154.65	58.57	3.12	23.70
200 x 250	12	12	10	2992.47	438.68	164.69	4.10	38.90

Staigrig Open Grid Flooring

Staigrig stainless steel grid is a lightweight, corrosion resistant open grid flooring, ideal for use where hygiene, low maintenance and assured long life are required.

The combination of durability and high strength means Staigrig is a very cost-effective alternative to galvanised steel and aluminium grid floors. It is available in mill finish, pickled and passivated or electropolished finish.

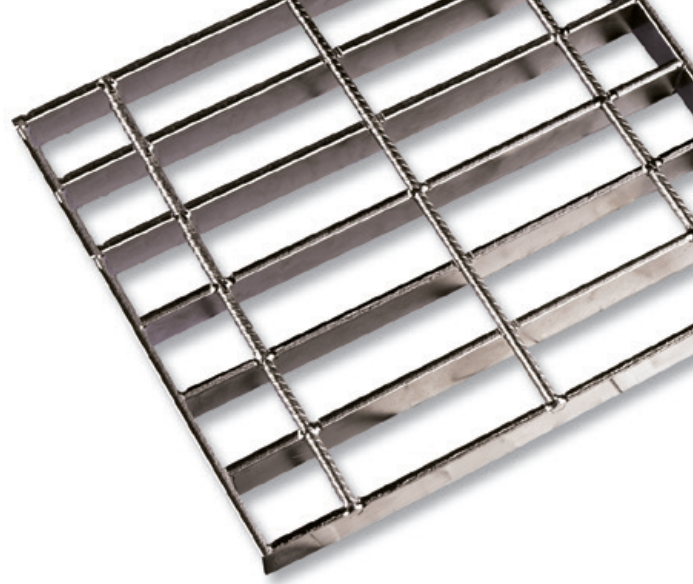
Stainless Steel Staigrig open grid flooring is available in either grade 304 or 316 and manufactured in standard sized panels of 1000mm max span x 989mm max width for ease of site handling. Panels can be produced to customers' specific requirements within these dimensions using our universal tooling.

Each panel consists of 25mm x 5mm bearer bars at 41mm centres and 6mm rebar restraints at 100mm centres.

Staigrig panels are supplied fully bound and full mill certification is available if required.

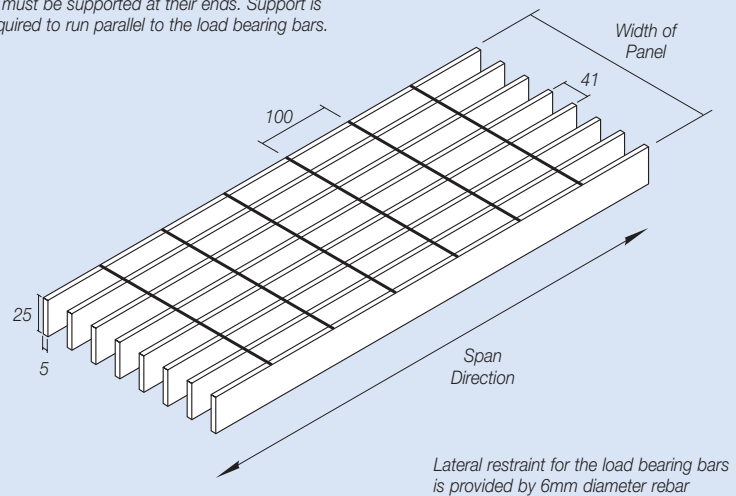
When ordering please specify:

1. Grade of stainless steel required
2. Span, width and quantity of panels



Load Bearing Bar 25 x 5mm

Load bearing bars run in the direction of the span. These must be supported at their ends. Support is not required to run parallel to the load bearing bars.



Clear Span (mm)	25 x 5 bars at 41 c/c Uniformly Distributed Load		25 x 5 bars at 41 c/c Load Concentrated on 150mm Square		25 x 5 bars at 41 c/c Load Concentrated on 300mm Square	
	Permissible Load (kN/m ²)	Deflection (mm/kN/m ²)	Permissible Load (kN)	Deflection (mm/kN)	Permissible Load (kN)	Deflection (mm/kN)
300	163.731	0.003	4.028	0.128	14.097	0.039
350	120.292	0.006	3.295	0.210	10.573	0.070
400	92.099	0.010	2.788	0.320	8.458	0.110
450	72.769	0.017	2.417	0.461	7.049	0.170
500	58.943	0.026	2.132	0.639	6.042	0.242
550	48.713	0.038	1.908	0.857	5.286	0.331
600	40.933	0.053	1.726	1.118	4.699	0.440
650	34.878	0.073	1.576	1.428	4.229	0.569
700	30.073	0.098	1.450	1.790	3.845	0.720
750	26.197	0.130	1.343	2.207	3.524	0.895
800	23.025	0.168	1.250	2.685	3.253	1.096
850	20.396	0.214	1.169	3.227	3.021	1.324
900	18.192	0.269	1.098	3.836	2.819	1.581
950	16.328	0.334	1.036	4.518	2.643	1.870
1000	14.736	0.410	0.980	5.276	2.488	2.191

Note: All loads listed are limited to: Bending Stress $\leq 145\text{N/mm}^2$, Shear Stress $\leq 96.67\text{N/mm}^2$, Deflection $\leq \text{Span}/100$

Worldwide contacts for Leviat:

Australia

Leviat
98 Kurrajong Avenue,
Mount Druitt Sydney, NSW 2770
Tel: +61 - 2 8808 3100
Email: info.au@leviat.com

Austria

Leviat
Leonard-Bernstein-Str. 10
Saturn Tower, 1220 Wien
Tel: +43 - 1 - 259 6770
Email: info.at@leviat.com

Belgium

Leviat
Industrielaan 2
1740 Ternat
Tel: +32 - 2 - 582 29 45
Email: info.be@leviat.com

China

Leviat
Room 601 Tower D, Vantone Centre
No. A6 Chao Yang Men Wai Street
Chaoyang District
Beijing · P.R. China 100020
Tel: +86 - 10 5907 3200
Email: info.cn@leviat.com

Czech Republic

Leviat
Business Center Šafránková
Šafránková 1238/1
155 00 Praha 5
Tel: +420 - 311 - 690 060
Email: info.cz@leviat.com

Finland

Leviat
Vädursgatan 5
412 50 Göteborg / Sweden
Tel: +358 (0)10 6338781
Email: info.fi@leviat.com

France

Leviat
6, Rue de Cabanis
FR 31240 L'Union
Toulouse
Tel: +33 - 5 - 34 25 54 82
Email: info.fr@leviat.com

Germany

Leviat
Liebigstrasse 14
40764 Langenfeld
Tel: +49 - 2173 - 970 - 0
Email: info.de@leviat.com

India

Leviat
309, 3rd Floor, Orion Business Park
Ghodbunder Road, Kapurbawdi,
Thane West, Thane,
Maharashtra 400607
Tel: +91 - 22 2589 2032
Email: info.in@leviat.com

Italy

Leviat
Via F.lli Bronzetti 28
24124 Bergamo
Tel: +39 - 035 - 0760711
Email: info.it@leviat.com

Malaysia

Leviat
28 Jalan Anggerik Mokara 31/59
Kota Kemuning, 40460 Shah Alam
Selangor
Tel: +603 - 5122 4182
Email: info.my@leviat.com

Netherlands

Leviat
Oostermaat 3
7623 CS Borne
Tel: +31 - 74 - 267 14 49
Email: info.nl@leviat.com

New Zealand

Leviat
2/19 Nuttall Drive, Hillsborough,
Christchurch 8022
Tel: +64 - 3 376 5205
Email: info.nz@leviat.com

Norway

Leviat
Vestre Svanholmen 5
4313 Sandnes
Tel: +47 - 51 82 34 00
Email: info.no@leviat.com

Philippines

Leviat
2933 Regus, Joy Nostalg,
ADB Avenue
Ortigas Center
Pasig City
Tel: +63 - 2 7957 6381
Email: info.ph@leviat.com

Poland

Leviat
Ul. Obornicka 287
60-691 Poznan
Tel: +48 - 61 - 622 14 14
Email: info.pl@leviat.com

Singapore

Leviat
14 Benoi Crescent
Singapore 629977
Tel: +65 - 6266 6802
Email: info.sg@leviat.com

Spain

Leviat
Polígono Industrial Santa Ana
c/ Ignacio Zuloaga, 20
28522 Rivas-Vaciamadrid
Tel: +34 - 91 632 18 40
Email: info.es@leviat.com

Sweden

Leviat
Vädursgatan 5
412 50 Göteborg
Tel: +46 - 31 - 98 58 00
Email: info.se@leviat.com

Switzerland

Leviat
Grenzstrasse 24
3250 Lyss
Tel: +41 - 31 750 3030
Email: info.ch@leviat.com

United Kingdom

Leviat
President Way, President Park,
Sheffield, S4 7UR
Tel: +44 - 114 275 5224
Email: info.uk@leviat.com

United States of America

Leviat
6467 S Falkenburg Rd.
Riverview, FL 33578
Tel: (800) 423-9140
Email: info.us@leviat.us

For countries not listed

Email: info@leviat.com

Leviat.com

Notes regarding this catalogue

© Protected by copyright. The construction applications and details provided in this publication are indicative only. In every case, project working details should be entrusted to appropriately qualified and experienced persons. Whilst every care has been exercised in the preparation of this publication to ensure that any advice, recommendations or information is accurate, no liability or responsibility of any kind is accepted by Leviat for inaccuracies or printing errors. Technical and design changes are reserved. With a policy of continuous product development, Leviat reserves the right to modify product design and specification at any time.

For more information on the following products, please contact:

**Masonry, Structural and
Precast Concrete products:**

+64 (0) 3 376 5205
info.ancon.nz@leviat.com
Ancon.co.nz

**Remedial Masonry
products:**

+64 (0) 3 376 5205
info.helifix.nz@leviat.com
Helifix.co.nz

General Enquiries

+64 (0) 3 376 5205
Leviat.com

Sales Offices and Production

North Island:

246D James Fletcher Drive
Otahuhu
Auckland 2024
New Zealand

South Island:

2/19 Nuttall Drive
Hillsborough
Christchurch 8022
New Zealand

Leviat.com

Leviat[®]
A CRH COMPANY

Imagine. Model. Make.

[Leviat.com](https://www.leviat.com)